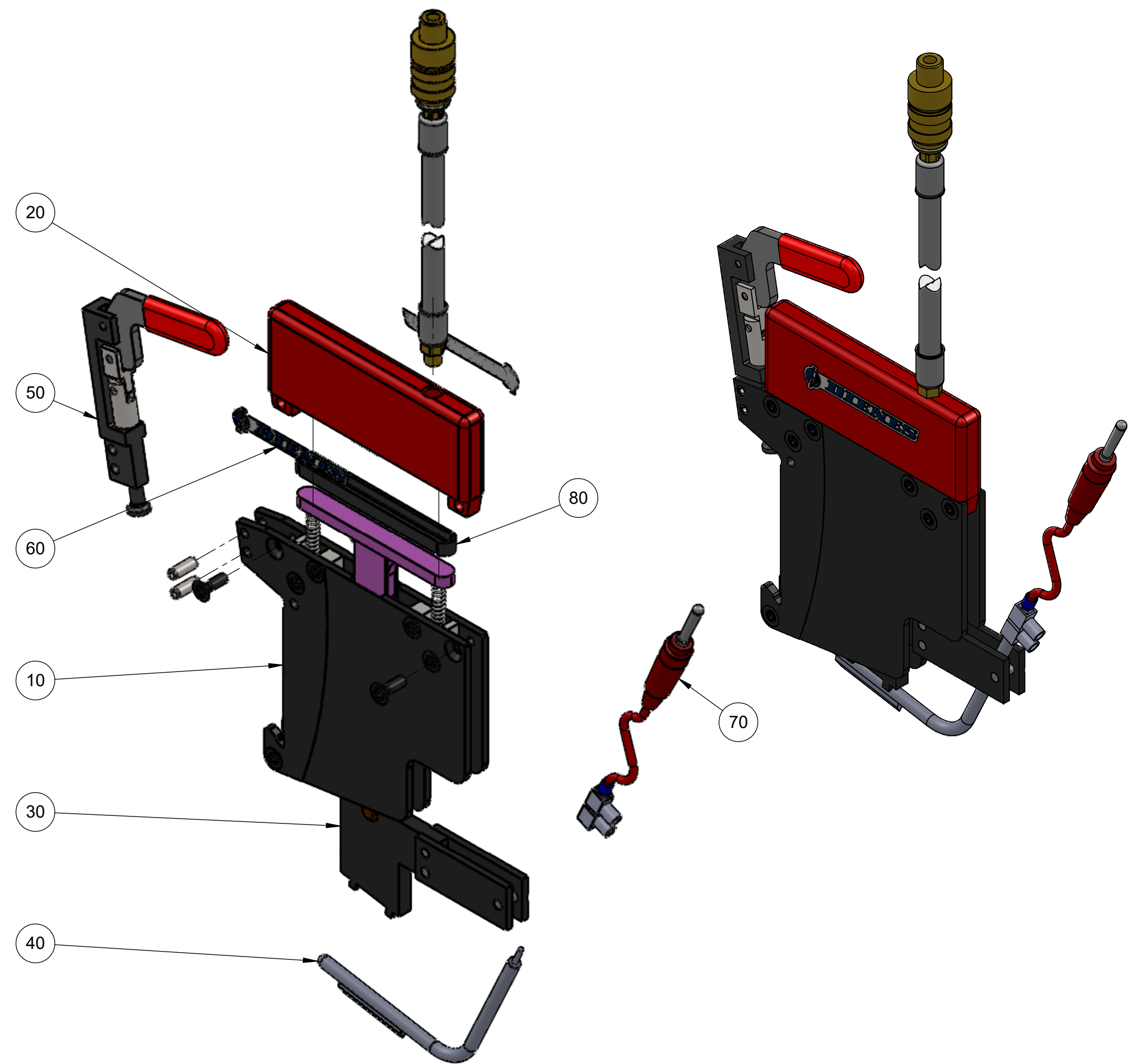
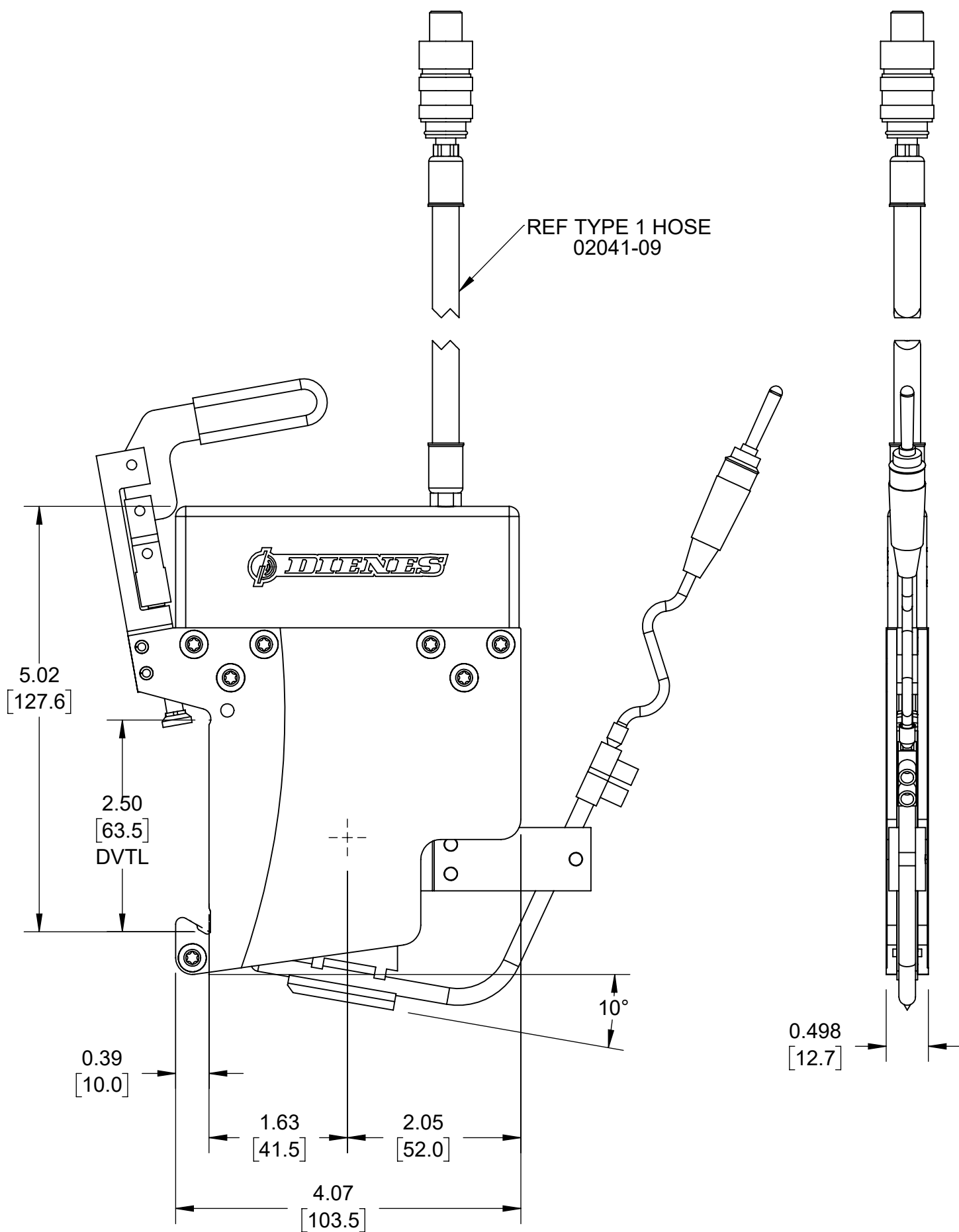


User Component Qty per Stk UM Description

02032-09	-1.00 EA	CYLINDER,PRESSURE - PQAS
02035-09	-1.00 EA	PIN,BRG,1/2" HLDR 22MM BRG
02037-09	-1.00 EA	CLAMP ARM - PQAS 1/2"
02254	-1.00 EA	KNF,SCORE 3.0X.86X.24-45° 52
02676	-1.00 EA	BRG,BALL,OPEN 8X22X6
222158-20	-1.00 EA	CLAMP ASSY,1/2PQAS(10-24 TIP)
412414-01	-1.00 EA	SPRG,RETURN,PQAS/PQDS
0010 02023-01	1.00 EA	HLDR,PQAS1/2",STD,SCR FIX
0020 420441	1.00 EA	CYLINDER,PRESUR,PQAS 1/2" HEAT
0030 023589	1.00 EA	CARRIER,HOT ELEMENT 1/2" PQAS
0040 02310	1.00 EA	HEATING ELEMENT,12VDC 90WATT
0050 02832	1.00 EA	QUICK CLAMP FOR PQAS 1/2"
0060 33686-0015	2.00 EA	LOGO DECAL 11.3MM X 70MM NEW
0070 420456	1.00 EA	CABLE,POWER,HEATCUT
0080 02033-09	1.00 EA	GASKET

REVISIONS			
REV.	ERN	DATE	CHC'D BY
-	4272	04/17/18	RELSD

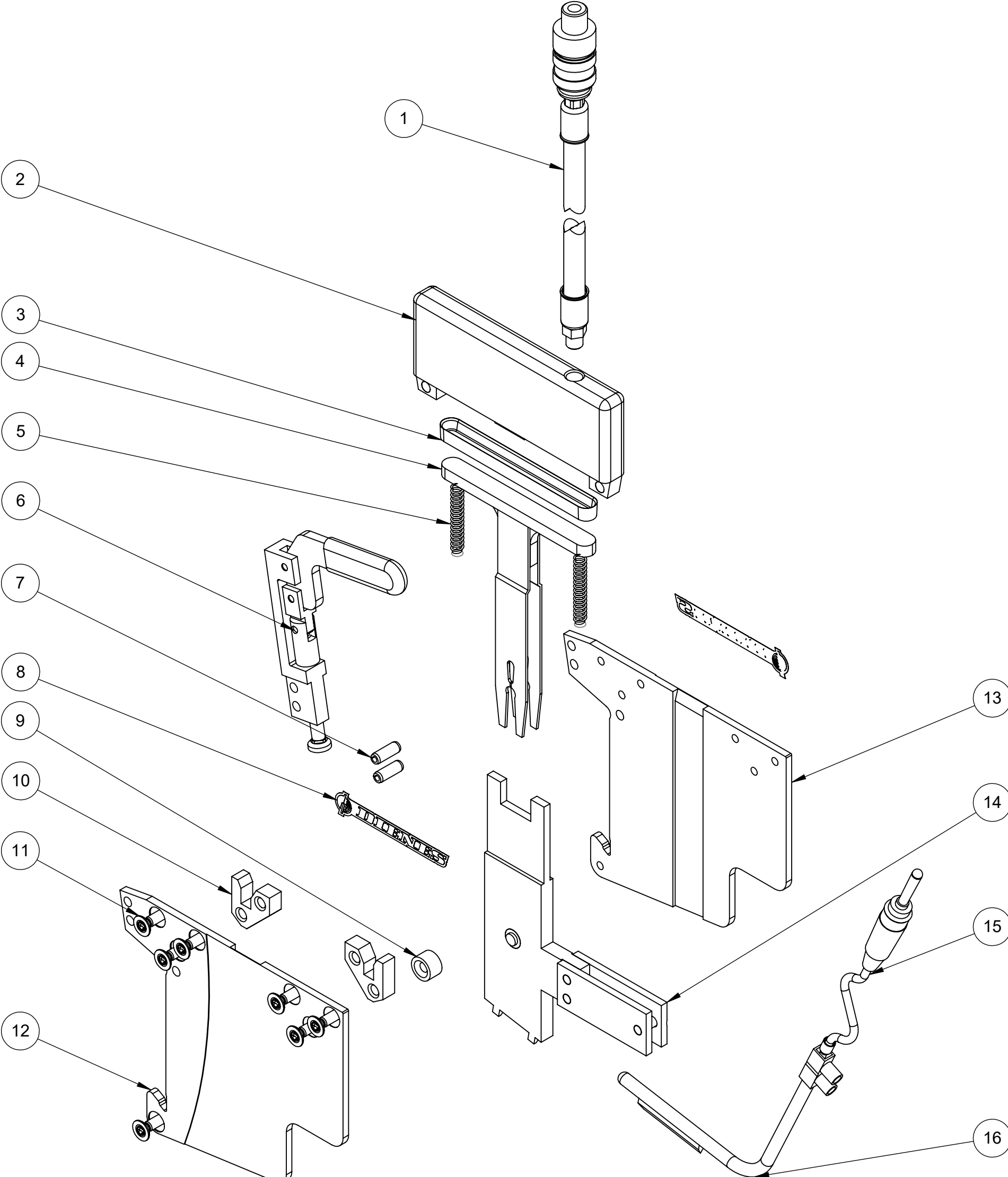


- NOTES:
1. MATERIAL: SEE BOM
  2. MACHINE FINISH WHERE SPECIFIED.
  3. BREAK ALL SHARP EDGES.
  4. FINISH COATING: NONE
  5. [ ] METRIC FOR REFERENCE ONLY.
  6. APPROX WEIGHT: 1.75 lbs

This document is the property of  
Dienes Corporation  
It may contain proprietary information  
DO NOT USE FOR PURPOSES  
OTHER THAN THOSE INTENDED

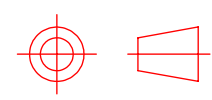
		<b>DIENES CORPORATION</b> Spencer Massachusetts	
US PROJECTION		HLDR,PQAS1/2",QC,HEATCUT,90WATT	
REFERENCE METRIC DATA		Unless Otherwise Noted Dims in Inches	Drawn by: MSR
DIM	TOL	Tolerances Unless Noted:	Date: 04/18/2018
O.D.		.XXXX ±.0005	Checked by: MSR
I.D.		.XXX ±.005	Date: 04/18/2018
THK.		.XX ±.010	Scale: 2:3
REF DWG: P2035-0001		FRACT: ±.015	DO NOT SCALE DRAWING
		ANGLE: ±1/2°	Sheet 1 of 2
		Finish Unless Noted: ✓	Drawing Number CP2035-0002
			Rev. -
			For Internal DIENES CORPORATION Use Only

**PQAS 1/2", QC, Heat Cut Holder**  
**Dienes No. P2035-0002**



ITEM NO.	PART NUMBER	DESCRIPTION	QTY.
1	02041-09	HOSE,AIR,TYPE 1 - 20" W/CPLR	1
2	420441	PQAS Pressure Cylinder	1
3	02033-09	Gasket,Bladder PQAS 1/2"	1
4	02034-09	PQAS 1/2" Knife Fork	1
5	02039-09	SPRG,PRESSURE,30mm LONG	2
6	02832	QUICK CLAMP FOR PQAS 1/2"	1
7	02777	PIN,SPRING M4x12	2
8	33686-0015	LOGO,DECAL	2
9	02038-09	Distance Ring	1
10	02599	INTERMEDIATE PIECE PQAS 1/2"	2
11	02095-09	SCR,CAP,FL TORX HD,M4x12	7
12	02768	PQAS RH SIDEPLATE (C'bore'd holes)	1
13	02769	PQAS LH SIDEPLATE (Thd holes)	1
14	023589	CARRIER,HOT ELEMENT 1/2" PQAS	1
15	420456	CABLE,POWER HEATCUT	1
16	02310	HEATING ELEMENT,12VDC 90WATT	1

This document is the property of  
**Dienes Corporation**  
 It may contain proprietary information  
 DO NOT USE FOR PURPOSES  
 OTHER THAN THOSE INTENDED

 <b>US PROJECTION</b>	<b>DIENES CORPORATION</b> <i>Spencer Massachusetts</i>	
	<b>HLD, PQAS 1/2", QC, HEATCUT, 90WATT</b>	
<b>REFERENCE METRIC DATA</b>		Unless Otherwise Noted Dims in Inches Tolerances Unless Noted: .XXX ±.0005 .XX ±.005 .X ±.010 FRACT: ±.015 ANGLE: ±1/2° Finish Unless Noted: <input checked="" type="checkbox"/> 125
DIM	TOL	Drawn by: <b>MSR</b> Date: <b>04/18/2018</b> Checked by: <b>MSR</b> Date: <b>04/18/2018</b> Scale: <b>2:3</b>
O.D.		Drawing Number <b>CP2035-0002</b>
I.D.		Rev. <b>-</b>
THK.		Sheet <b>2</b> of <b>2</b>
REF DWG:		For Internal DIENES CORPORATION Use Only