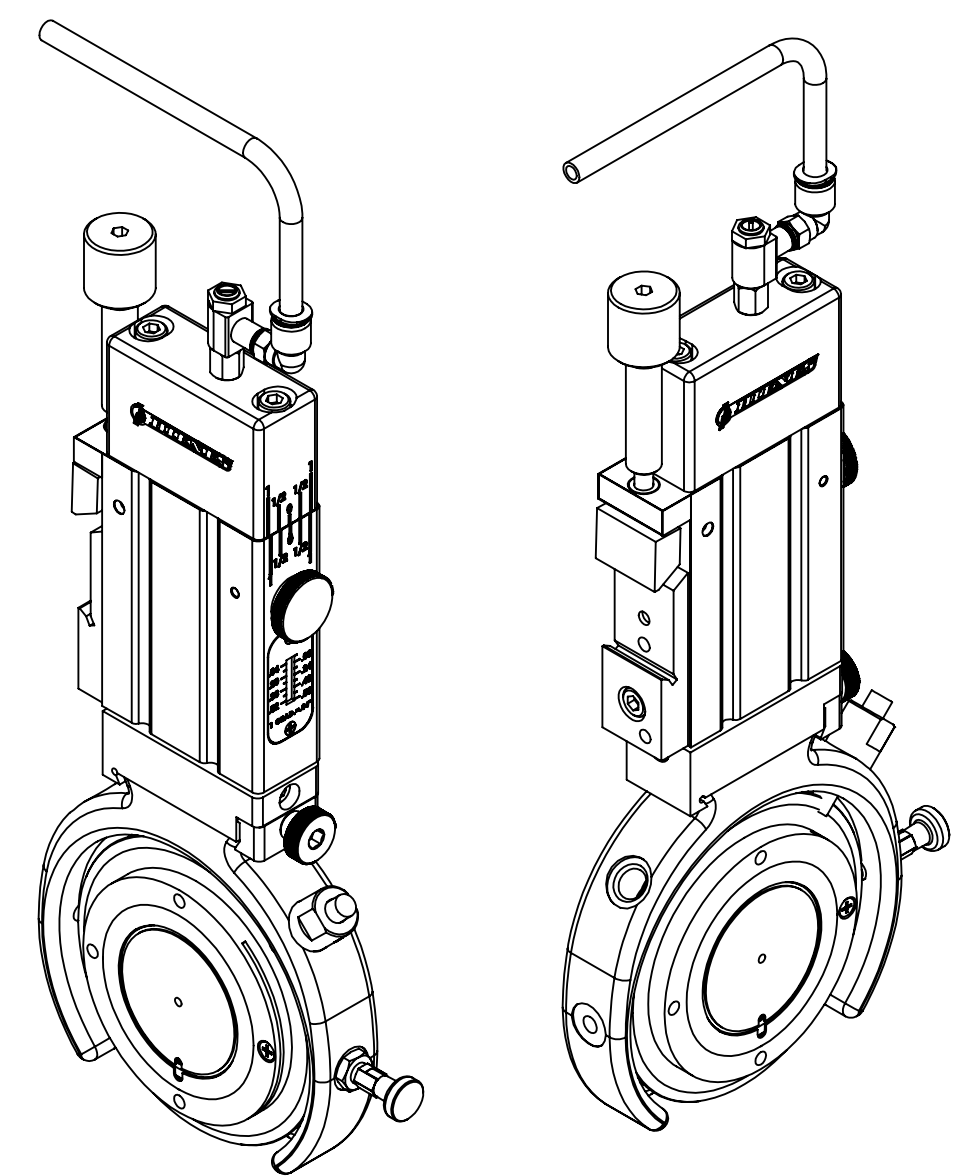
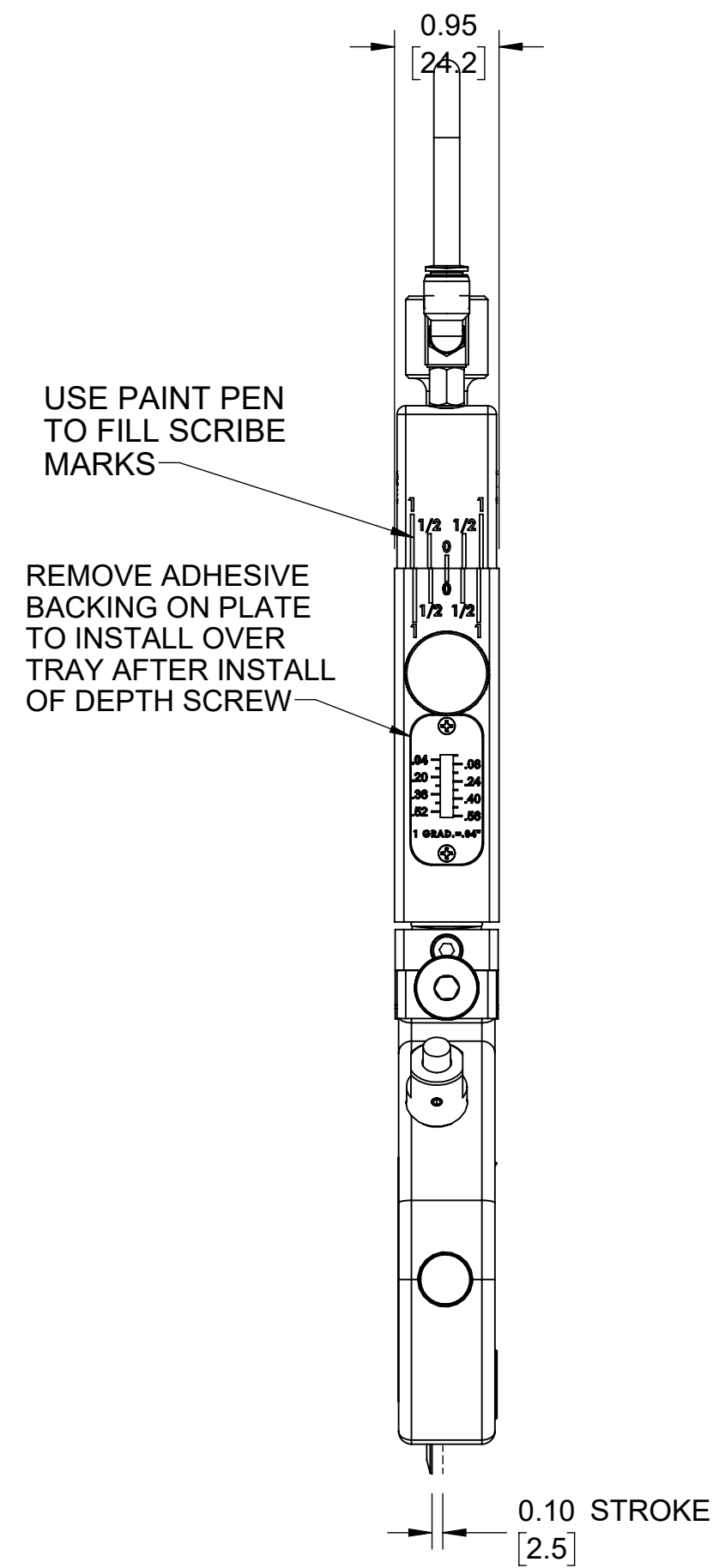
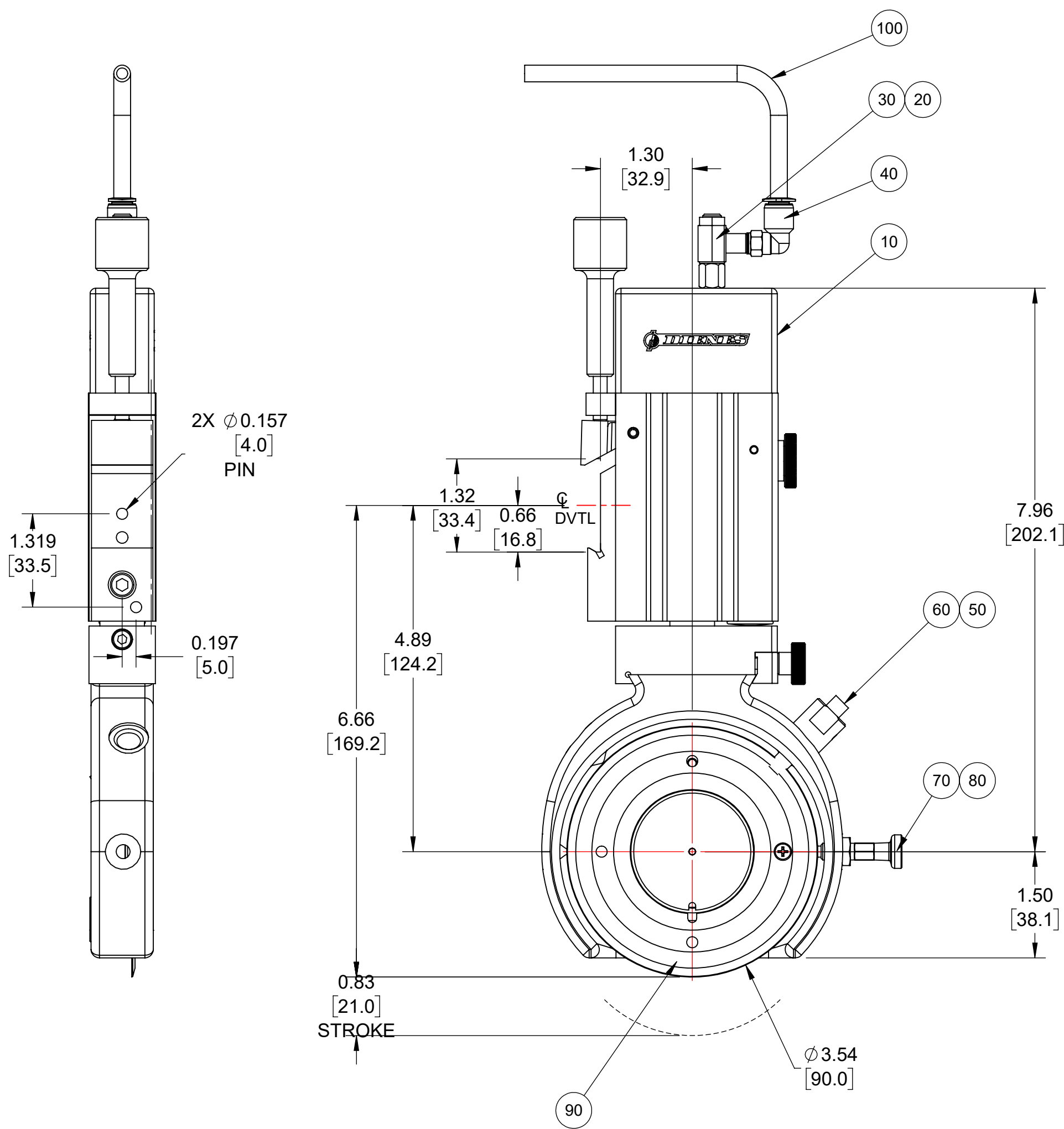


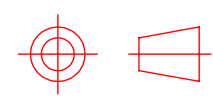
|     |      |          |         |                                |
|-----|------|----------|---------|--------------------------------|
| (A) | 0010 | 10156299 | 1.00 EA | HLDR,DC25-90,NONSTD DVTL       |
|     | 0020 | 022198   | 1.00 EA | ADPT,NIPPLE,1/4-32M X M5F      |
|     | 0030 | 650931   | 1.00 EA | VALVE,SUPPLY FLOW CONTROL M5   |
|     | 0040 | 650698   | 1.00 EA | CONNECTOR,ELBOW,M5-6MM FS      |
| (A) | 0050 | 10156924 | 1.00 EA | ASSY,OIL WICK DC25-90          |
|     | 0060 | 653638   | 1.50 IN | ROPE,HARD FELT 1/4"DIA.        |
|     | 0070 | 654525   | 1.00 EA | PLUNGER,INDEX, M6              |
|     | 0080 | 615694   | 1.00 EA | NUT,HEX,JAM,M6 FS              |
| (B) | 0090 | 022358   | 1.00 EA | KNF,FL,090X060X1.2,DBR,G,D2    |
|     | 0100 | 650138   | 0.50 M  | TUBING,6MM OD X 4MM ID-BLUE FS |

| REVISIONS |      |            |          |
|-----------|------|------------|----------|
| REV.      | ERN  | DATE       | CHC'D BY |
| -         | 4377 | 2/6/2019   | RELS D   |
| A         | 4661 | 10/22/2021 | BGB      |
| B         | 4751 | 9/19/2022  | BGB      |

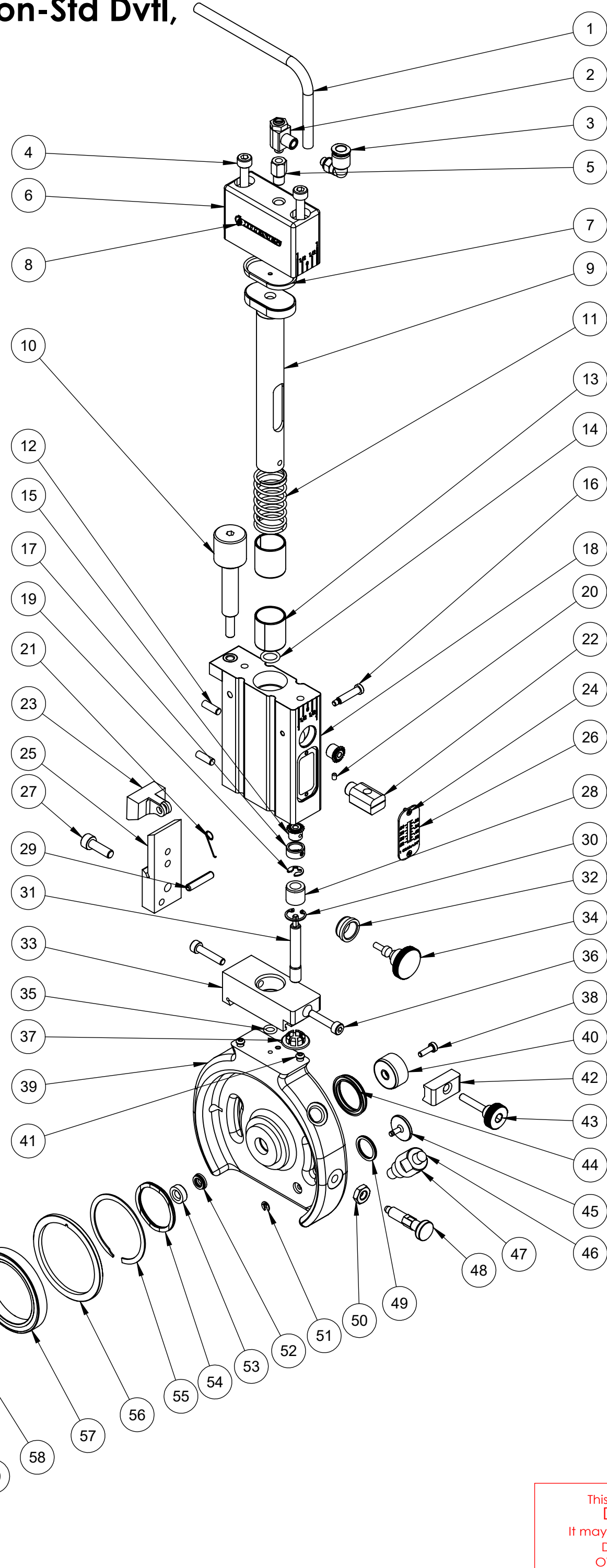
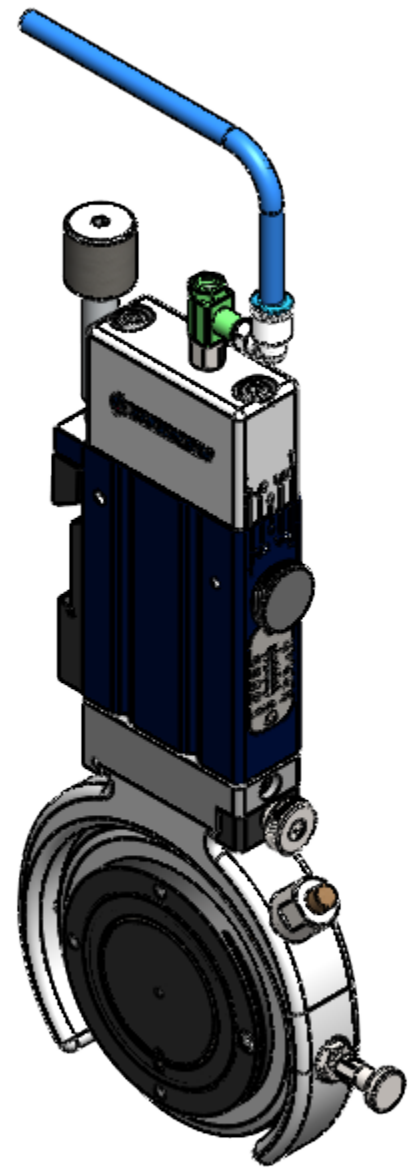


- NOTES:
1. MATERIAL: SEE BILL OF MATERIAL.
  2. THIS HOLDER IS STANDARD CONFIGURATION.
  3. USE FIXTURE TO ENSURE HOLDER IS ASSEMBLED SQUARE, IF APPLICABLE
  4. TEST HOLDER FOR STROKE & PNMEUMATIC LEAKS.
  5. APPROX. WEIGHT: 4.84 LBS
  6. FINISH: REFERENCE DIENES BLUE (RAL 5002).
  7. HOLDER DESIGNED FOR TIDLAND CLASS1 DOVETAIL.
  8. HOLDER SAME AS P3046-0001, EXCEPT HAS TUBING,KNOB AND FLOW CONTROL W/FITTINGS.

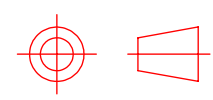
This document is the property of  
**Dienes Corporation**  
 It may contain proprietary information  
 DO NOT USE FOR PURPOSES  
 OTHER THAN THOSE INTENDED

|   |     |  |                         |
|---|-----|--|-------------------------|
| <br><b>US PROJECTION</b> |     | <b>DIENES CORPORATION</b><br>Spencer Massachusetts   |                         |
| REFERENCE METRIC DATA   |     | <b>HLDR,DC25-90,LH,TID DVTL,OLWCK</b>  |                         |
| O.D.  | TOL | Unless Otherwise Noted<br>Dimensions Are In Inches   | Drawn by: <b>BGB</b>    |
| I.D.  |     | Tolerances Unless Noted:<br>.XXX ±.005<br>.XX ±.010<br>FRACT. ±.015<br>ANGLE ±1/2°<br>Finish Unless Noted: <input checked="" type="checkbox"/> 125 | Date: <b>02/06/2019</b> |
| THK.  |     | DO NOT SCALE DRAWING   | Checked by: <b>BB</b>   |
| REF DWG: <b>P3046-0001</b>  |     | Sheet <b>1</b> of <b>2</b>   | Date: <b>02/06/2019</b> |
|   |     | Drawing Number <b>CP3046-0004</b>  | Scale: <b>1:2</b>       |
|   |     | For Internal DIENES CORPORATION Use Only   |                         |
|   |     |  | Rev. <b>B</b>           |

# DC25-90, Shear Cut Holder, Non-Std Dvttl, Dienes No. P3046-0004



| ITEM NO. | PART NUMBER   | DESCRIPTION                       | QTY. |
|----------|---------------|-----------------------------------|------|
| 1        | 650138        | TUBING,6MM OD X 4MM ID-BLUE       | 0.5M |
| 2        | 650931        | VALVE, SUPPLY FLOW CONTROL M5     | 1    |
| 3        | 650698        | CONN,ELBOW,M5-6MM                 | 1    |
| 4        | 613580        | SCR,CAP,SOC HD,M5X40              | 2    |
| 5        | 022198        | ADPT,NIPPLE,1/4-32M X M5F         | 1    |
| 6        | 245F060321010 | CYLINDER,COVER,DS25               | 1    |
| 7        | 245F040320010 | SEAL,U-CUP,CYLINDER,BUNA          | 1    |
| 8        | 33686-0007    | LOGO DECAL 7.3MMX45MM             | 2    |
| 9        | 245F040339010 | SHAFT,GUIDE                       | 1    |
| 10       | 15036734      | SCR,CLAMP,DC25,W/KNURL            | 1    |
| 11       | 263D040120010 | SPRG,COMPRESSION,0.656X0.746X1.44 | 1    |
| 12       | 616014        | PIN,DOWEL,M4X12                   | 2    |
| 13       | 022154        | BUSHING,DU 16x18x20               | 2    |
| 14       | 022595        | O-RING,8X5X1.5                    | 1    |
| 15       | 656888        | GEAR,MITER,48P,20°PA              | 2    |
| 16       | 657044        | SCR,SHLD,SOC HD,M3X16,S.S.        | 1    |
| 17       | 245F020324010 | BUSHING,BRASS,10.7X7.9X5          | 1    |
| 18       | 245F319A01001 | BODY,MAIN,DS25                    | 1    |
| 19       | 0D06799004002 | RING,RETAINING,EXT Ø4             | 1    |
| 20       | 657028        | SCR,SET,CUP PT,M2.5X3             | 2    |
| 21       | 412414-01     | SPRING,RETURN                     | 1    |
| 22       | 245F030322010 | SLIDER,DEPTH,ADJ,DS25             | 1    |
| 23       | 245F160312010 | CLAMP ARM DC25                    | 1    |
| 24       | 657123        | SCR,FL HD,PHILLIPS,M2X4 S.S.      | 2    |
| 25       | 245F160311010 | CLAMP,DOVETAIL,DC25 TO TID CL1    | 1    |
| 26       | 298G081001001 | PLATE,COVER,DEPTH,ADJ,DC25        | 1    |
| 27       | 613566        | SCR,CAP,SOC HD,M5X16              | 1    |
| 28       | 245F020340010 | BUSHING,GUIDE,DEPTH,ADJ,DS25      | 1    |
| 29       | 650981        | PIN,TENSION M4X20                 | 1    |
| 30       | 656932        | RING,RETAINING,INT                | 1    |
| 31       | 245F030323010 | SCR,DEPTH,ADJ,DS25                | 1    |
| 32       | 245F020341010 | BUSHING,FLANGE,0.500X0.406X0.25   | 1    |
| 33       | 245F060325010 | DRAW BAR                          | 1    |
| 34       | 245F328101001 | KNOB,ADJ.,DEPTH,DS25              | 1    |
| 35       | 022595        | O-RING,8X5X1.5                    | 1    |
| 36       | 613516        | SCR,CAP,SOC HD,M4X20              | 2    |
| 37       | 0FSTOPF000040 | PLUG                              | 1    |
| 38       | 657043        | Scr,Cap,Lo Soc Hd,M3x10,Seal      | 1    |
| 39       | 245F314101001 | HOUSING,HEAD,KNFE,DC25,90mm       | 1    |
| 40       | 245F020316010 | AXLE,PISTON,GUIDE,DC25-90         | 1    |
| 41       | 245F010338010 | PIN,LOCATING,HEAD                 | 2    |
| 42       | 245F030327010 | CLAMP,DOVETAIL                    | 1    |
| 43       | 234B020366010 | SCR,CLAMPING,DVTL,DC25            | 1    |
| 44       | 0FSDICH010001 | SEAL,U-CUP                        | 1    |
| 45       | 120420-ARC    | PIN,DETENT                        | 1    |
| 46       | 653638        | ROPE,HARD FELT 1/4"DIA.           | 1    |
| 47       | 245F330A01001 | ASSY,OIL WICK DC25-90             | 1    |
| 48       | 654525        | PLUNGER,INDEX, M6                 | 1    |
| 49       | 657631        | SPRING,WAVE,Ø.625                 | 1    |
| 50       | 615694        | HEX, JAM NUT,M6                   | 1    |
| 51       | 90768A102     | RING,RETAINING,EXT Ø3MM           | 1    |
| 52       | 655682        | SEAL,U-CUP,BUNA                   | 1    |
| 53       | 245F020315010 | RETAINER,GUIDE,AXLE,DC25-90       | 1    |
| 54       | 657336        | SPRING, WAVE, 1X1.25X.25          | 1    |
| 55       | 656885        | RING,RETAINING,EXT Ø40MM          | 1    |
| 56       | 242F060208010 | NUT,RETAINER,BRG,DC25             | 1    |
| 57       | 656001        | BRG,BALL,40X52X7                  | 1    |
| 58       | 245F070318010 | CARRIER,BRG                       | 1    |
| 59       | 022147        | PIN,DOWEL,M3X3                    | 1    |
| 60       | 245F070317010 | CARRIER,KNF,DC25-90               | 1    |
| 61       | 022358        | KNF,FL,090X060X1.2,DBR,G,D2       | 1    |
| 62       | 242F207101010 | NUT,RETAINER,KNF,DC25             | 1    |
| 63       | 657282        | SCR,MACH,FL HD,PHLPS M3X5         | 1    |



**US PROJECTION**

**DIENES CORPORATION**  
*Spencer Massachusetts*

**HLD,DC25-90,LH,TID DVTL,OLWCK**

|                          |  |                                    |                       |
|--------------------------|--|------------------------------------|-----------------------|
| Tolerances Unless Noted: |  | Drawn by: <b>BGB</b>               |                       |
| .XXXX ±.0005             | XXX ±.005  | Date: <b>02/06/2019</b>            | Checked by: <b>BB</b> |
| .XX ±.010                | FRACT: ±.015   | Date: <b>02/06/2019</b>            | Scale: <b>1:2</b>     |
| ANGLE ±1/2°              | Finish Unless Noted: <input checked="" type="checkbox"/> 125 | Drawing Number: <b>CP3046-0004</b> |                       |
| DO NOT SCALE DRAWING     |  | Sheet <b>2</b> of <b>2</b>         | Rev. <b>B</b>         |

**For Internal DIENES CORPORATION Use Only**

This document is the property of  
Dienes Corporation  
It may contain proprietary information  
DO NOT USE FOR PURPOSES  
OTHER THAN THOSE INTENDED